

TIMES

OF BRAZIL

Established 1919
Brazil's Oldest English-language Publication.
Vania Williamson, Diretora Responsável
Impresso e distribuído por EDITORA MORY LTDA.,
Rua do Resende 65, Rio de Janeiro, GB.,
como suplemento dominical do
BRAZIL HERALD
SEPTEMBER 13, 1970

Barra da Tijuca-Niemeyer's Spacial City

RIO DE JANEIRO — At Niemeyer's quarters, vehicules don't meet with pedestrians. An inhabitant can leave home and take either his automobile, or his boat at the front lake. All the rooms of the apartments — even the maid's room — are face to the street and 75% of the total area consists of parks, squares and gardens.

The residential and commercial centers, which Niemeyer has projected for Barra da Tijuca, following the main lines of Lucio Costa's pilot plan, is the biggest architectural unit of this kind, already made over the world. There, about 80,000 people will live in tranquility and confort unknown to Rio, in 75 towers of 34 floors each.

The first six towers, beyond the commercial center, park gardens of the utilitarian buildings will be finished in about 2 years. On the 700 square meters of ground 18,000 apartments will be constructed and about 800 stores, besides clubs, theaters, movies, churches, exposition centers, schools, restaurants, kindergardens, supermarkets as well as gasoline stations, so that the inhabitants won't need anything to buy outside their city.

There will be tranquility and silence in their residential area. The commercial and amusement sector will be a place "full of life and movement, proper to meetings and wanted contacts." This is what Niemeyer wants. He has also projected two different squares: The Sunny Square, by the sea and easily reached by bathers and the Shady Square, which will be covered with wood laths, or material made of nylon "which permit the easy visibility of the restaurants and bars with their tables in the open air, in a shady and pleasant surrounding.

Near the building-towers there will be stores. Only the playgrounds and tropical gardens which will be designed by Burle Marx. Ventilation, illumination, green areas, humanization, close to nature, to the mountains, to the lakes and sea. The unit planned by Niemeyer for Barra

da Tijuca, will allow thousands of people a kind of life, which up to now was only available to a few in Rio de Janeiro.

BETWEEN THE SEA

The residential and commercial area of Barra da Tijuca is located between the beach and the Avenue of the Americas, short distance after the bridge over the Marapendi canal. This canal a little farther ahead crosses almost all the center of the ground, and especially divides the unit into two nucleus of towers.

As soon as the first towers will be ready, one can already go from Barra da Tijuca to Lagoa in 10 minutes, by the auto-way Lagoa-Barra da Tijuca. To the town taking the tunnel Rebouças and the viaduct of the Av. Paulo de Frontin, the trip won't take more than 20 minutes.

Two supermarkets of the unit will be ready in 6 months and will have parking space for 8,000 cars. In 1971 one will already be able to use the auto-ways Lagoa-Barra da Tijuca. The firm which is building it predicts that a lot of Copacabana, Ipanema and others of the Southern Zone dwellers will prefer to go shopping to Barra da Tijuca by car in 10 minutes than lose much more time finding a place to leave the car, and sometimes very far from the shops.

But those who will live in the unit of Oscar Niemeyer, wont have to go out from Barra da Tijuca for anything. About ... 1,000 shops will be at their disposal, of all kinds, office building, doctors, schools, movies, theaters, medical centers, dentists and lawyers. But those — who will need to go to town will have the facility of 2 buses for each tower, to avoid the problem of finding parking space in town.

The commercial centers with about 1,000 shops, will be finished later, in about one year. Whoever comes from the Southern Zone of Rio bathe in the sea at the opportunity.



BARRA DA TIJUCA

Rio's future dreamland

AT HOME — TRANQUILITY

"The adopted solution, seeks to maintain some characteristics of our previous study, to avoid constructions (shops, commerce) near the habitation towers and let them, as the original idea was, simply be in a big park.

So Oscar Niemeyer shows on his project the fact that the residential towers away from a shopping area will guarantee the inhabitants among other things tranquility.

For each residential tower there will be a "playground and a lot of gardens, all designed by Burle Marx. 10,000 coconut trees have been planted in the last two years. A large part of the gardens will have fruit trees to stimulate the children on the contact with nature.

Beyond that, a lot of clubs will be constructed, near the

units with swimming-pools for those who don't want to bathe in the sea. There will be a small lake on the center of the ground, which will be as a kind of anchorage. It will be integrated with all the other lakes and canals of the region. Whoever wants, will be able to take a boat instead of car and take a trip to all the points of the "Baixada de Jacarepaguá" or even go out in the sea.

There will also be a line of "hovercrafts" (amphibian vehicules) which will travel between Barra da Tijuca Centers and the litoral, in 10 minutes. The pedestrians won't need the cars. The car will go directly to the garage and there people will take the elevator to the apartments. The children and those who don't own cars will go down by the elevator and leave at the ground level, the same level of the garden.

On the habitation zone, Niemeyer organized a scheme that allows independence between pedestrians and vehicules, "criterion which we searched to maintain all over the unit, that explains the passage over the canal and the subterranean passages on the Avenue of the Americas.

The dimensions of the apartments will vary, they will be of one room, and one, two, three or four bedrooms. There will be a 40m distance between the towers, and will be 23m in diameter. In every apartment, even in the maid's room, there will always be a view of the sea or the mountains. The floors will be practically of glass.

The buildings will be of concrete, because Lucio Costa, who was the author of the pilot-plan of Barra da Tijuca, considered that the color of the sea and of mountain forests of Tijuca, needed no additional coloring. Niemeyer was careful to keep a big space between the towers, to make loca-

lization possible between gardens, the utilitarian buildings as schools and kindergardens.

COMMERCE AND ITS MOVEMENT

The commercial and diversion sector of Oscar Niemeyer is transversal to the sea. There will be shops, restaurants, bars, movies, churches and theaters besides 5 buildings of 20 floors for offices.

It's a place full of life and movement — says Niemeyer — to contrast favorably with the tranquility and calmness of the habitational areas.

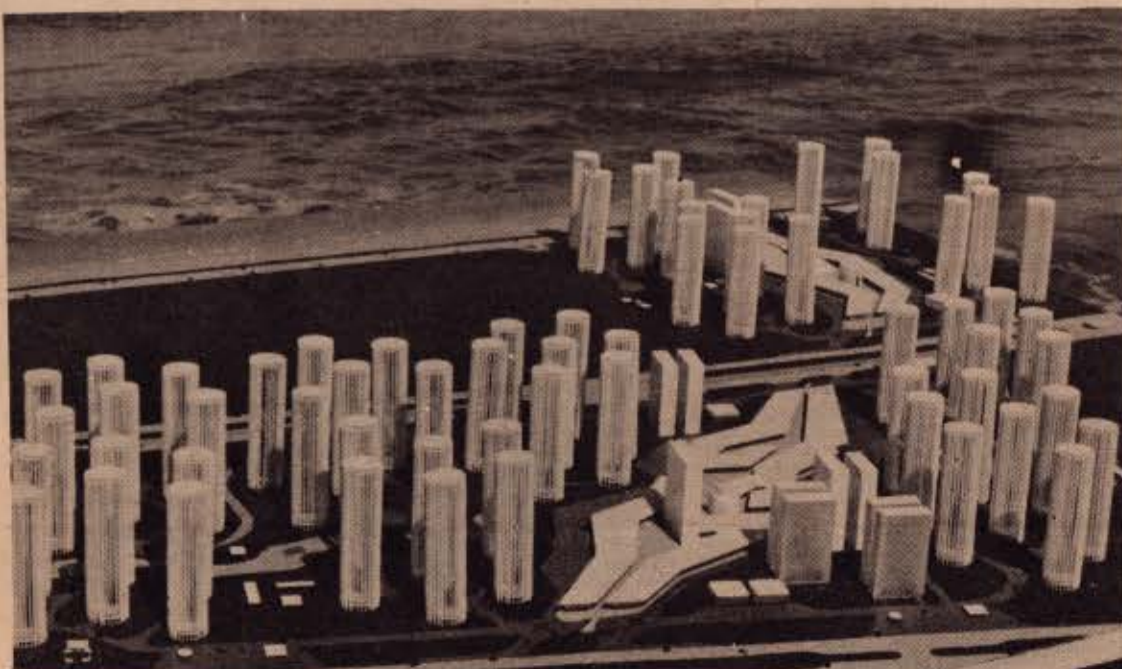
In the commercial center, all the shops will be on the ground level and the internal roads for pedestrians only. On each extreme, there will be the Places of Sun and Shadow, also destined exclusively to pedestrians.

There are planned special service streets for the cars, so the loading and unloading is made exclusively from the rear of the shop. There service streets protected by the cover of the shops, will be linked to the side streets of the unit.

Down the Shadow place, there will be a exposition center with an area of 25 thousand square meters without commercial purpose, only to promote the Brazilian artist. Two famous painters will be invited to do the two big murals on each side of the commercial center. The names of Djanira, Di Cavalcanti, José Paulo Moreira and Carlos Scliar are being considered.

THE BEGINNING

The place of the center is already established and the soundings are in an advanced phase, with the work in a mounting phase. The urbanization has already begun and the work of the tractors will begin the next days.



SPACIAL CITY

View of Niemeyer's spacial city planned for Barra da Tijuca